

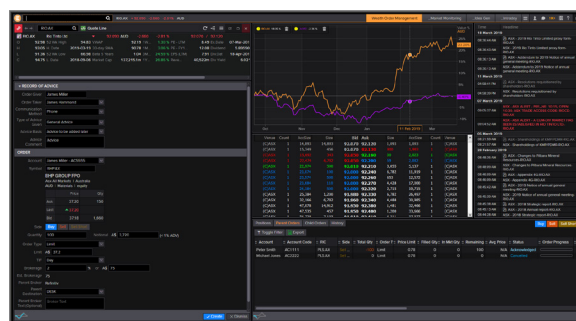
Eikon – Wealth Order Management

Award-winning global advisor platform Eikon, delivers a multi-asset, multi-currency and multi-broker trading solution for financial advisors.

As the Wealth market becomes more advice-oriented and transactional margins are under increasing pressure, businesses are looking to differentiate themselves based on service and value-adding solutions.

Wealth Order Management is a fully integrated global trading solution in Eikon. It seamlessly combines idea generating market data and analytics with dynamic trading capabilities. Connected to our global FIX network Autex Trade Route, advisors have access to over 800 brokers around the world.

The platform is back office and OMS agnostic, providing advisors a holistic view of client portfolios across multiple structures including HIN, SRN and Custody to offer a richer, more informative experience for investment advisors, wealth managers and retail brokers.



BENEFITS AT A GLANCE

Connectivity	Performance	Content
<ul style="list-style-type: none"> • OMS and EMS agnostic • Broker neutral execution through global FIX network of over 800 brokers • Access global exchange traded instruments including equities, ETFs, ETOs, and warrants • Supports all "order type" and "time in force" attributes • Supports brokerage override, BPO, DTR working and SRN orders • Supports Record of Advice to comply with local industry standards • Integration with "source of truth" back office providers and portfolio management systems • Consolidates client portfolios across multiple structures including HIN, SRN and Custody • Level 1 and Level 2 global market data with visibility to private orders for local markets 	<ul style="list-style-type: none"> • Integrated work flow with pre-trade decision and idea generation supported by news, market data and analytics • Dynamic order entry ticket updates based on customer profile, instrument and destination exchange • Reduced risk through simplified order entry process 	<ul style="list-style-type: none"> • Exclusive access to Reuters News • Exchange announcements • I/B/E/S Estimates • Fundamentals • Global market pricing across multiple assets classes • ESG data on over 7000 global public companies • Company Ownership & Filings data • Equity ratings via StockReports+

Visit refinitiv.com

REFINITIV™
DATA IS JUST
THE BEGINNING

